



HEPATOCYTES USES FOR RESEARCH

Metabolism studies

Drugs development

Toxicity studies

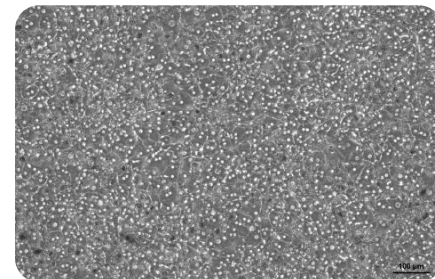
Enzymatic activity

Primary Human Hepatocytes are produced under rigorous QC Standards and supplied with:

- Demographic and clinical donor profile
- Viability and morphology assessment
- Metabolic and induction characterization
- Thawing and culture protocols

Categories:

- HeHuCS: Suspension
- HeHuCPM: Metabolism Certified
- HeHuCPI: Induction Certified
- HeHuCPT: Induction and Transporters Certified
- HeHuCP: Thawed Plated



Plated hepatocytes morphology 24h after seeding

Shipping conditions: -196°C (LN2 vapor container)

Media Available: Thawing (MHT), Plating (MHP), Maintenance (MHM)

PLATEABLE HEPATOCYTES – Analysis Certificate

Plateable Hepatocytes are characterized for CYP450 drug-metabolizing enzyme activity (Phase I), UGT & SULT activities (Phase II), and transporters.

DONOR DEMOGRAPHICS

Species	Sex	Race	Age	BMI	Smoker	Alcohol Use	Drug Use
Human	Male	Caucasian	69	23	No	No	No

Pathology	Medication	Serological Data
Colorectal cancer hepatic metastases	Enalapril	Tested negative less than 3 months before surgery

Post Thaw Lot information

Number of viable cells/vial: 5.6 ± 0.2*10 ⁶ (n=2)	Monolayer assessment* Plateability: YES Seeding density in 24 well recommended: 0.3*10 ⁶ cells/well in 0.5 ml
Post-thaw viability (%): 92.6 ± 2.2 (n=2)	
Cell morphology 24h	Cell morphology 72h

INDUCTION (SPECIFIC ACTIVITY)

ENZYME	BASAL activity (pmol/min/mg protein) ON DAY 1	BASAL activity (pmol/min/mg protein) ON DAY 4	INDUCED activity (pmol/min/mg protein) ON DAY 4	n-Fold INDUCTION
CYP1A2	11.52 ± 1.69	1.95 ± 0.06	341.66 ± 84.99	175.08
CYP2B6	13.19 ± 0.31	8.09 ± 0.81	74.83 ± 5.34	9.25
CYP3A4	13.73 ± 0.54	0.94 ± 0.12	20.71 ± 5.20	21.93

CYP (mRNA)	n-Fold INDUCTION
CYP1A2	11
CYP2B6	22
CYP3A4	191

ENZYME	CONJUGATE	pmol/min/mg
UGT	7-OH coumarin glucuronide	487.38 ± 56.45
SULT	7-OH coumarin sulfate	33.56 ± 3.72

3D Certification

- ✓ Access to Specific Donor demographics
- ✓ Customized Characterization available upon request
- ✓ Assured Minimum Yield & Viability per vial
- ✓ Available: Thawing & Culture protocols and media
- ✓ Technical Customer Service

SUSPENSION HEPATOCYTES – Analysis Certificate

Hepatocytes in Suspension are provided with basal enzymatic activity and viability over time assessment.

DONOR DEMOGRAPHICS

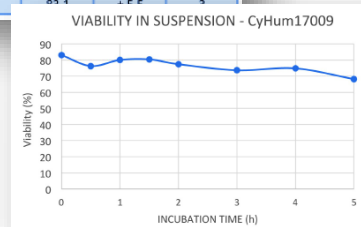
Species	Sex	Race	Age	BMI	Smoker	Alcohol Use	Drug Use
Human	Male	Caucasian	69	23	No	No	No

Pathology	Medication	Serological Data
Colorectal cancer hepatic metastases	Enalapril	Tested negative less than 3

POST THAW LOT INFORMATION

	RESULT	SD	n
NUMBER OF VIABLE CELLS (cells/vial):	3.3x10 ⁶	± 1.5	3
POST-THAW VIABILITY (%):	92.6 ± 2.2		

ISOFORMS	ACTIVITY (pmol/min/mg protein)
CYP1A2	55.53 ± 0.61
CYP2B6	21.19 ± 0.53
CYP3A4/5	1.99 ± 0.01



Common uses: Metabolic stability, Phenotyping, CYP inhibition and Uptake transporters.

For more information visit our Website or Contact us!

www.cytesbiotechnologies.com

info@cytesbiotech.com